

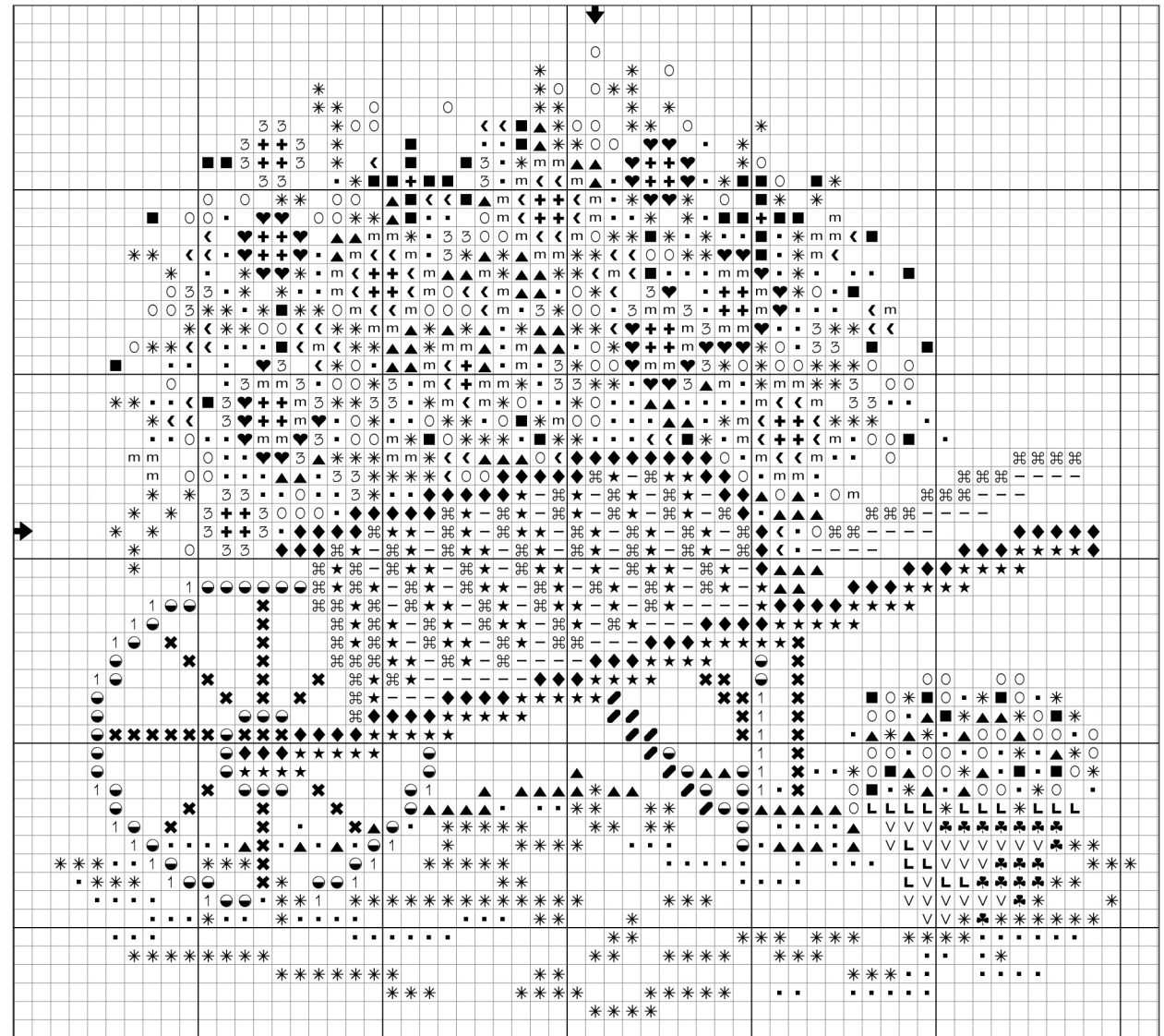


Design Count: 59w X 53h stitches

14-count: 4-1/8" w X 3-3/4" h

Cross stitch – two ply

DMC	COLOR	DMC	COLOR
✕	310 Black	+	744 Yellow-Pale
1	414 Steel Gray-DK	●	3021 Brown Gray-VY DK
<	601 Cranberry-DK	L	3064 Desert Sand
m	603 Cranberry	▲	3345 Hunter Green-DK
♥	604 Cranberry-LT	•	3347 Yellow Green-MD
3	605 Cranberry-VY LT	*	3348 Yellow Green-LT
-	610 Drab Brown-DK	v	3772 Desert Sand-VY DK
⌘	611 Drab Brown	○	3799 Pewter Gray-VY DK
★	612 Drab Brown-LT	○	3838 Lavender Blue-DK
◆	613 Drab Brown-VY LT	■	3840 Lavender Blue-LT
♣	632 Desert Sand-VY DK		



The Janlynn Corporation allows a photocopy / enlargement of this chart for personal use. Selling or distributing copies of this chart is strictly prohibited.